



# European IP Helpdesk

Stay ahead of the innovation game.

**European IP Helpdesk**  
IP and AI

09.04.2025





# European IP Helpdesk

- Service initiative of the European Commission
- Addressing **current and potential beneficiaries of EU-funded projects, researchers and EU SMEs**
- Free-of-charge first-line support on intellectual property (IP)
- Hands-on IP and innovation management support
- International pool of IP experts from various thematic fields
- Unique cooperation scheme with the Enterprise Europe Network: 43 ambassadors from 26 EU countries



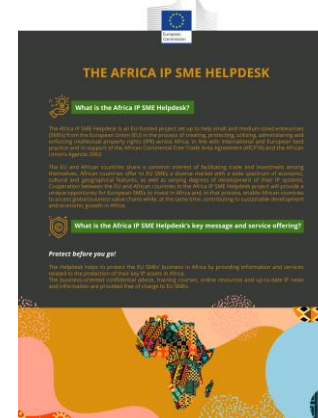
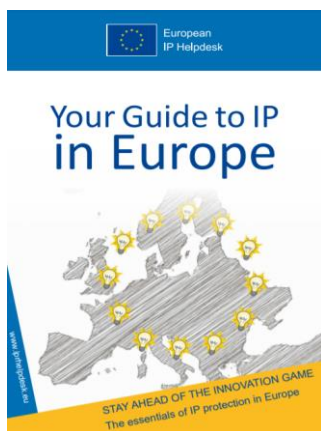


# The EC IP Helpdesks





# EC IP (SME) Helpdesk Hub – Gateway to Information



- E-learning modules & more
- Guides / Topic, country, sector-specific factsheets / Infographics
- Case studies



# Upcoming events



## Europa - Upcoming events

**09**  
APR  
2025

Training and workshops  
[EU - Webinar: IP and Artificial Intelligence](#)

(••) Live streaming available

**10**  
APR  
2025

Training and workshops  
[Transaction Based Growth SUMMIT: "Build-to-Sell"](#)

(••) Live streaming available

**15**  
APR  
2025

Training and workshops  
[EU - Webinar: IP for Future and Emerging Technologies](#)

(••) Live streaming available

**23**  
APR  
2025

Training and workshops  
[EU - Webinar: IP and Artificial Intelligence - Advanced](#)

(••) Live streaming available

**29**  
APR  
2025

Training and workshops  
[EU - Webinar: IP Commercialisation and Licensing](#)

(••) Live streaming available

**06**  
MAY  
2025

Training and workshops  
[EU - Webinar: IP Commercialisation & Licensing - Advanced](#)

(••) Live streaming available

**13**  
MAY  
2025

Training and workshops  
[EU - Webinar: Patents and Innovation](#)

(••) Live streaming available

**20**  
MAY  
2025

Training and workshops  
[EU - Webinar: Freedom to Operate](#)

(••) Live streaming available



# Thank you!

- [www.ec.europa.eu/ip-helpdesk](https://www.ec.europa.eu/ip-helpdesk)
- [helpline@iprhelpdesk.eu](mailto:helpline@iprhelpdesk.eu)
- [training@iprhelpdesk.eu](mailto:training@iprhelpdesk.eu)
- X [@iprhelpdesk](#)
- LinkedIn [/european-ipr-helpdesk](#)
- Subscribe / [Newsletter](#)



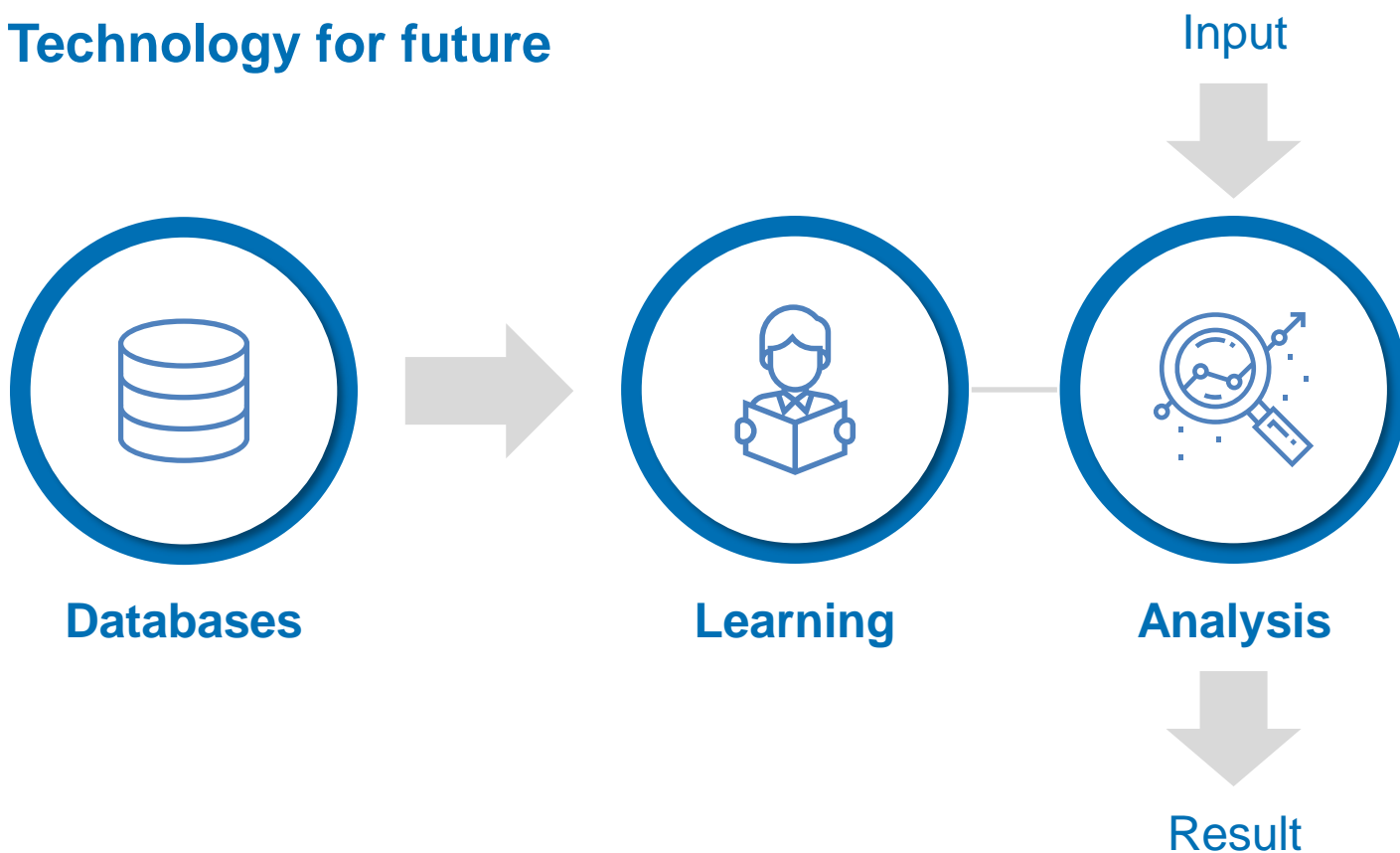




# Artificial Intelligence

What do we mean?

Technology for future

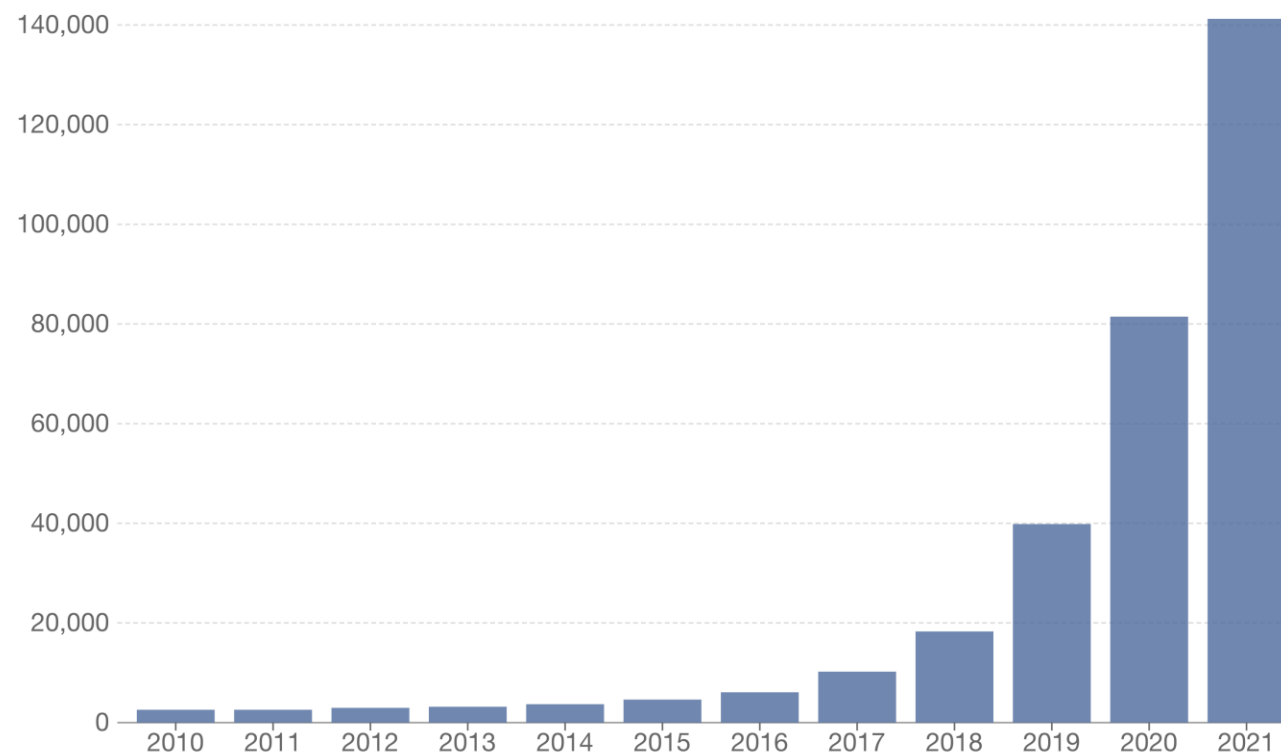




# Increase in Patent Applications

Annual patent filings for artificial intelligence technologies globally

Our World  
in Data



Source: Center for Security and Emerging Technology via AI Index Report (2022)

OurWorldInData.org/artificial-intelligence • CC BY

Note: Based on a search of relevant codes and keywords in the Cooperative Patent Classification and International Patent Classification systems.



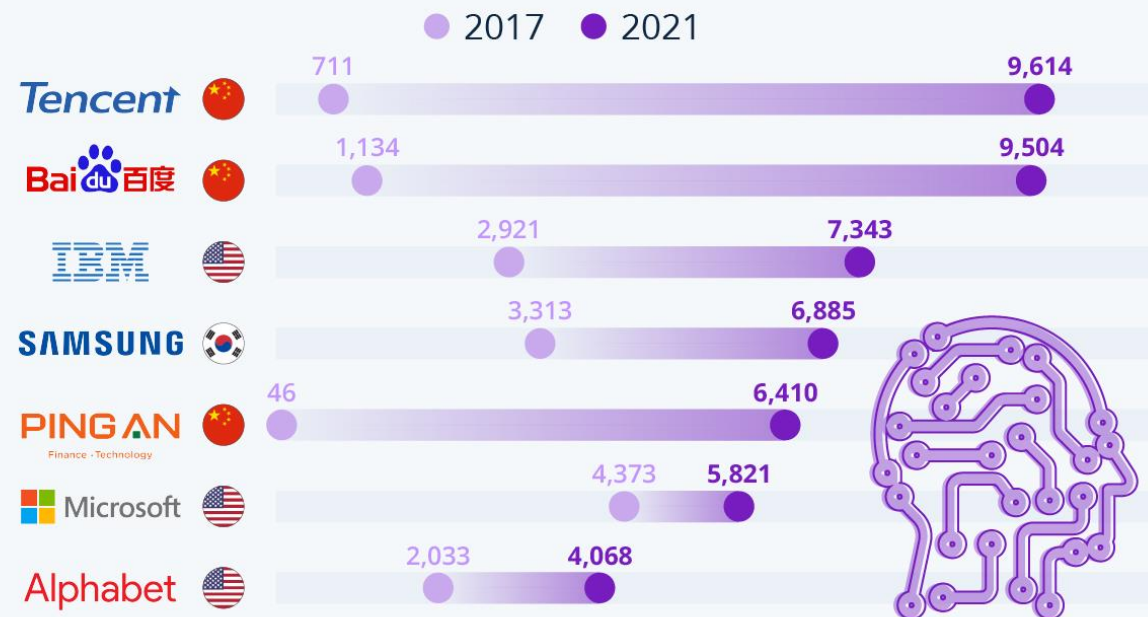
Picture source: Freepik.com





# The Companies Holding the Most AI Patents

Number of active AI and machine learning patent families held by company\*



\* Largest owners in 2021

Source: LexisNexis PatentSight





# European AI Act

- Common regulatory and legal framework
  - Agreed by Parliament and Council
    - Parliament amendment on IP
      - Entered into Force 2024



# IP and Artificial Intelligence



**Data ownership**



**Database Rights**



**Contractual Rights**



**Patents**

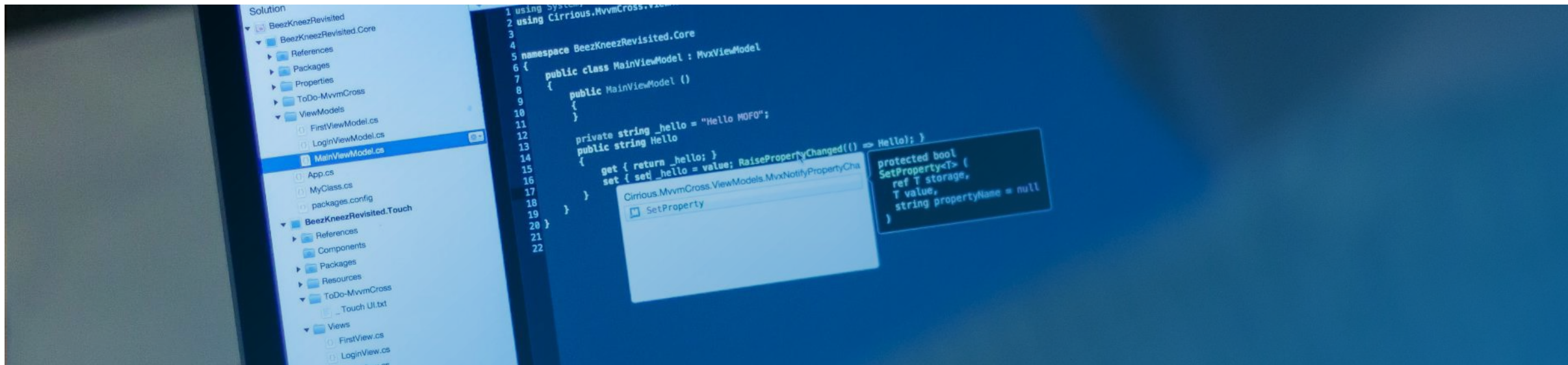




# Data Rights and Ownership



## Who owns data?



**Can we really talk  
about “ownership”?**

Different countries have different legal concepts

European Commission has proposals for several data related acts, including a Data Governance Act (applicable from September 2023)





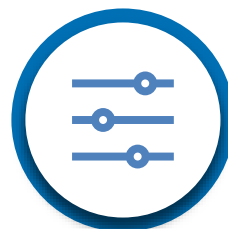
# Copyright



# Copyright Ownership



Level of Creativity Required for  
Copyright Protection



Data per se will not have this level



Software is protected – under  
Berne Convention



# Database Rights (Europe)



Protects  
collection of data



Excludes  
machine  
generated  
data



Not individual  
data items





# Contracts





# Contractual Arrangements



Use of input data



Curation of data



Exploitation of data



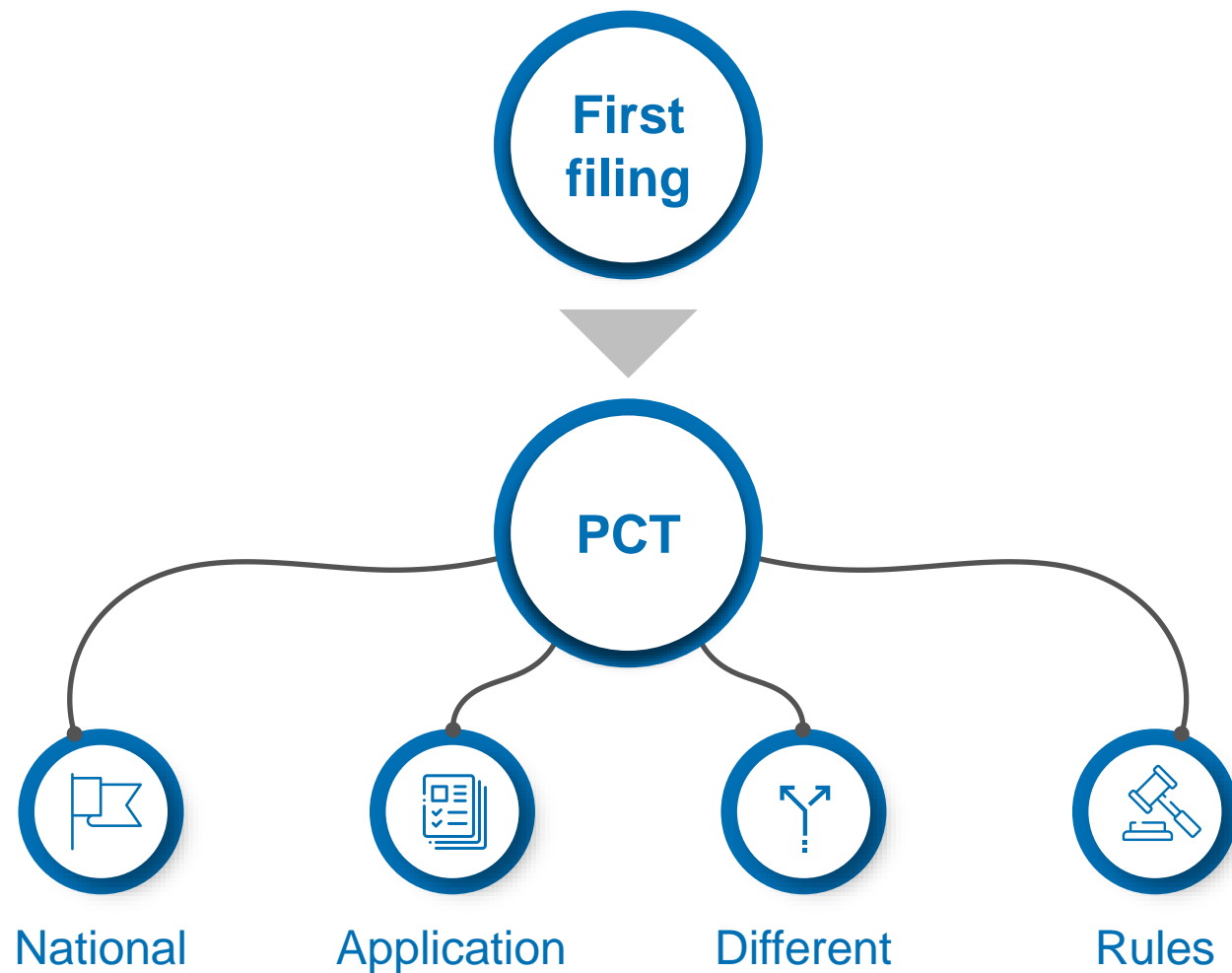
Exploitation of results



# Patent Rights



# Filing a Patent Application







## National Rights



Different countries treat AI differently



AI is often seen as software-based



US – rejects “abstract idea”  
§101 rejections

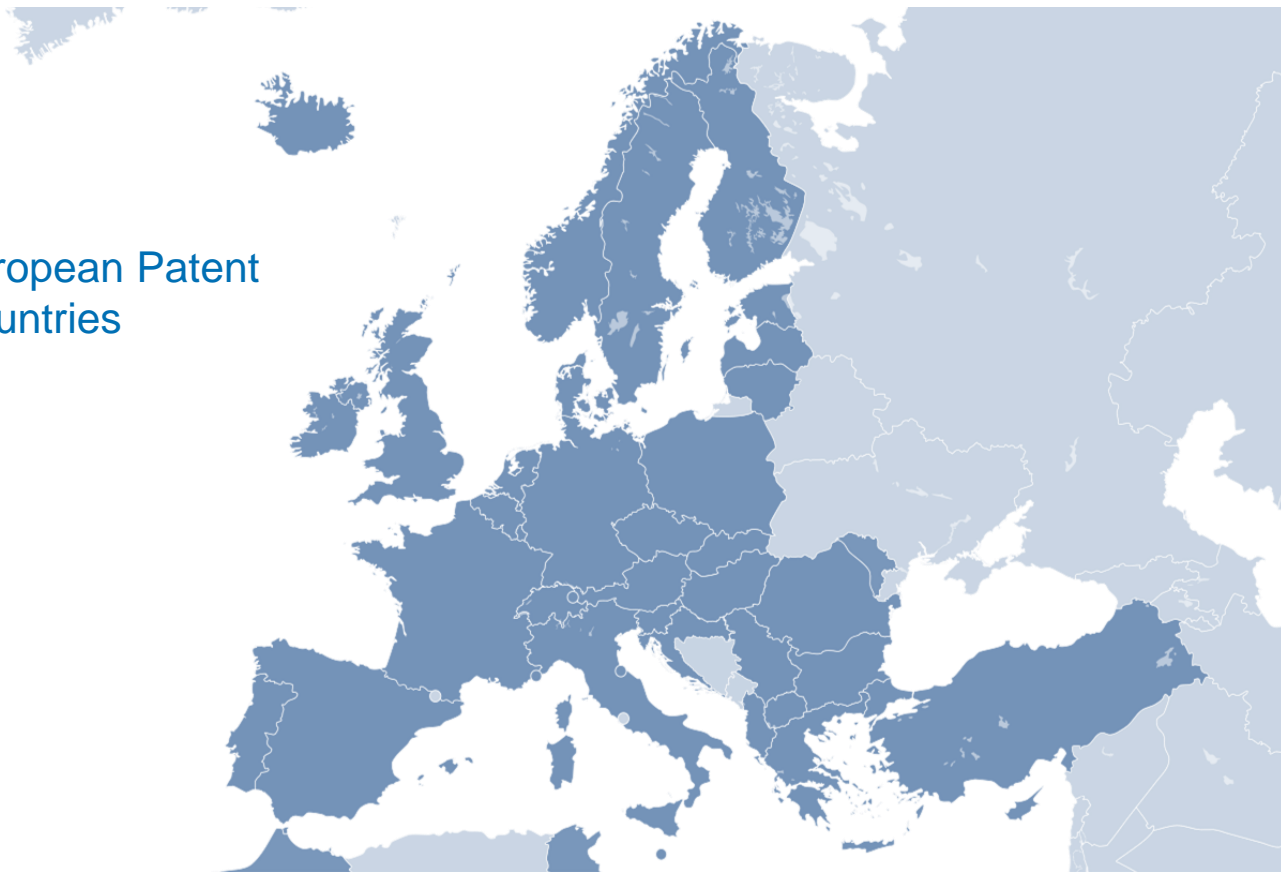


EU – “software excluded from patents per se”



## Focus on Europe

● European Patent  
Countries



Picture source: European Patent Office



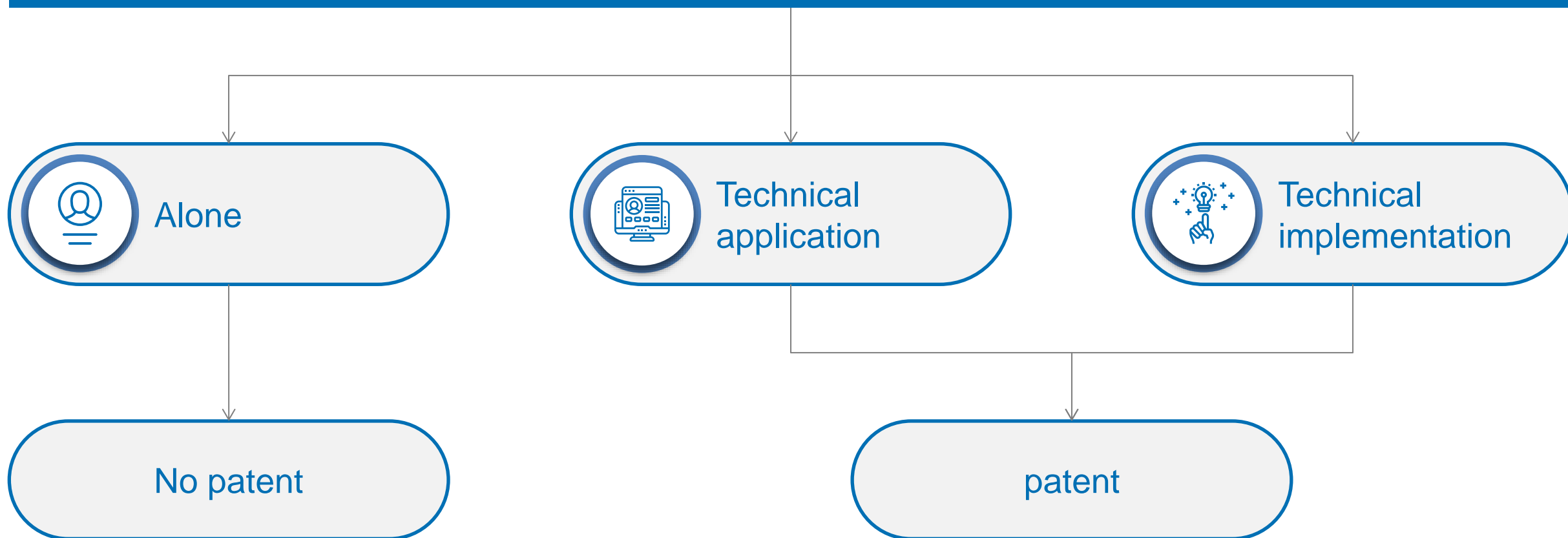
Picture source: [google.com/maps](https://www.google.com/maps)





## II. Guidelines for Examination of AI in the EPO (latest update 2025)

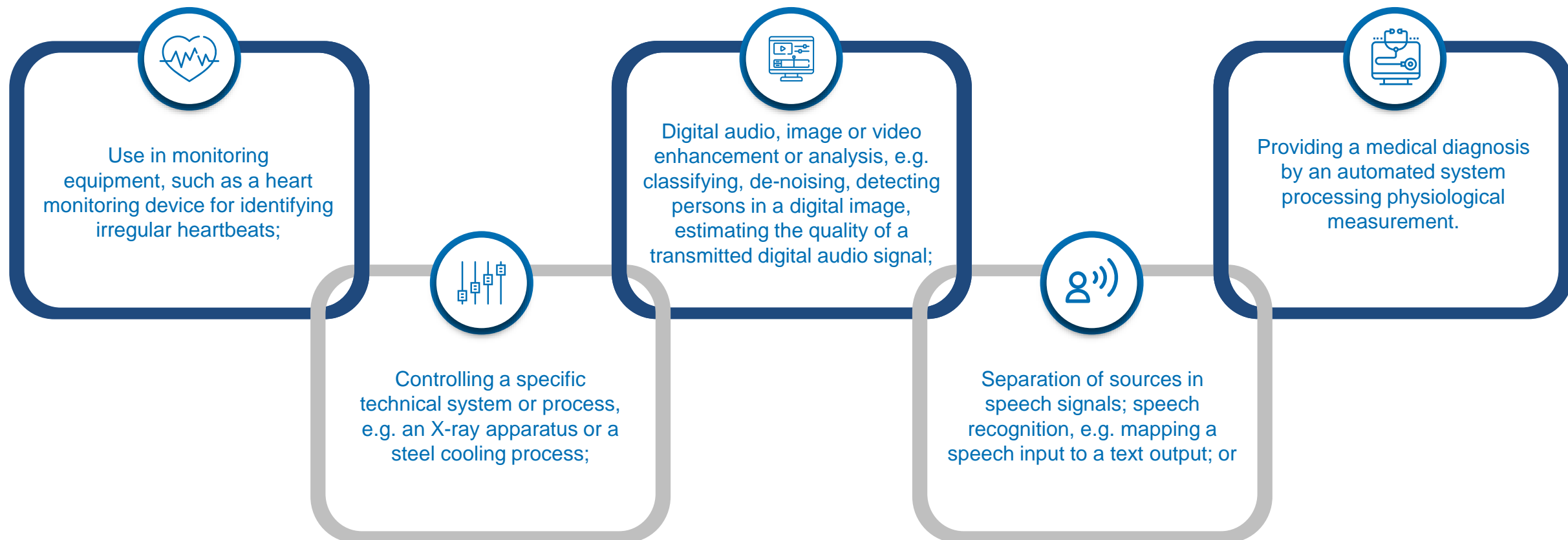
### Examined as inventions involving **mathematical methods**





# Technical Application

## First Case – Technical Application of a mathematical model



This technical purpose must be specific



# Technical Implementation

## Second Case - Technical Implementation of a mathematical model



Mathematical method is **particularly adapted** for that implementation.



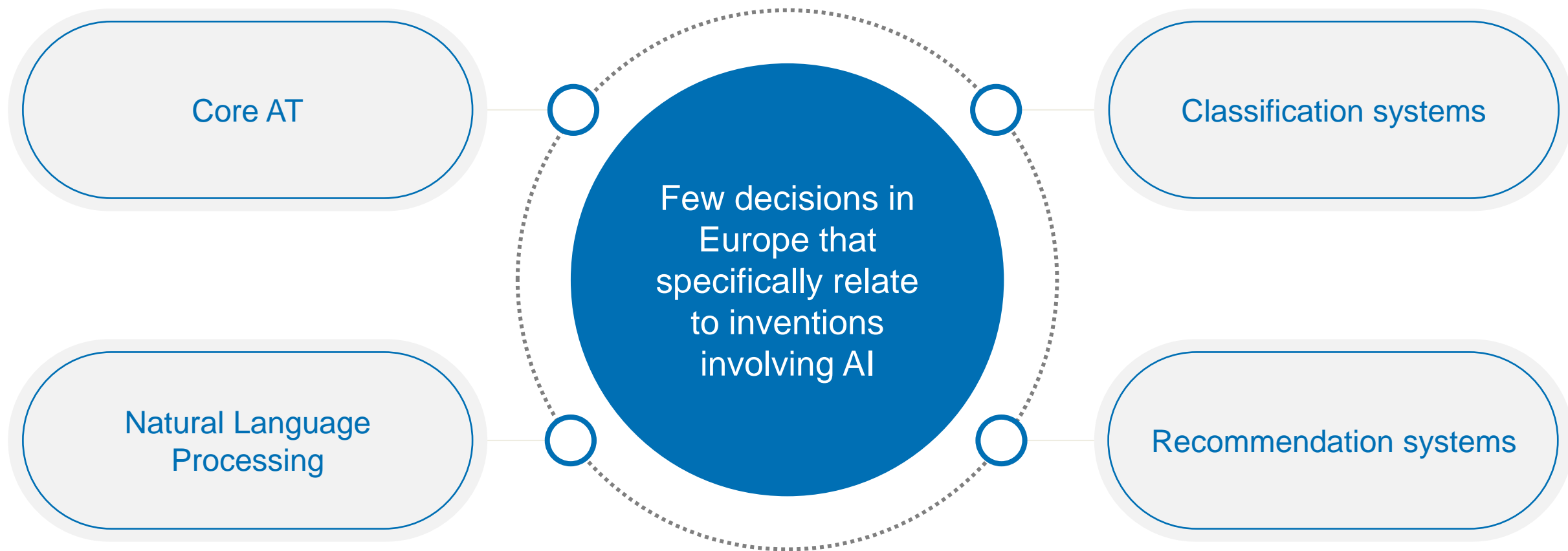
Data  
collection



Interaction between  
hardware elements  
to collect the data



## Patentability of Some AI Technologies



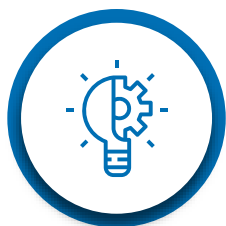


## Core AI

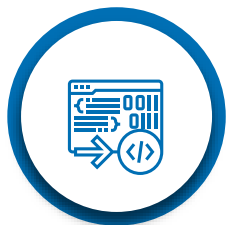
Fundamental building blocks of AI and machine learning, as opposed to the applications of AI

Difficult to file patent applications on innovations in this “Core AI”. EPO considers it not to be “technical”.

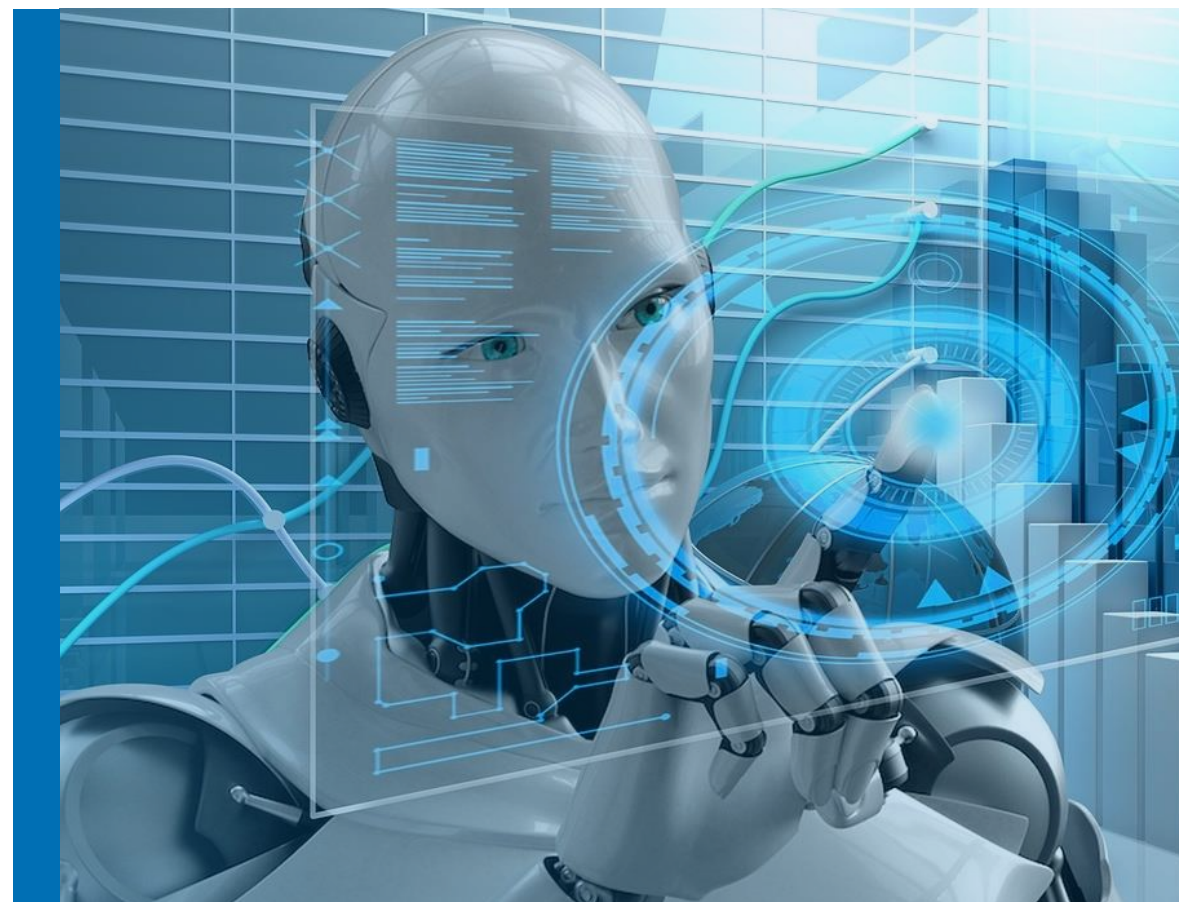
Overcome by specifying in detail



Implementation of the system



Application of  
algorithm



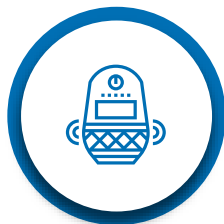




# Natural Language Processing

Allows a computer to interpret inputs, and to generate outputs, in languages such as English, German or Japanese.  
Example – Amazon's Alexa System

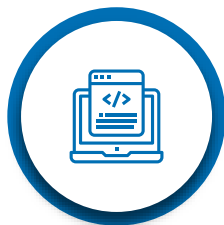
These virtual assistants use a range of NLP techniques, such as



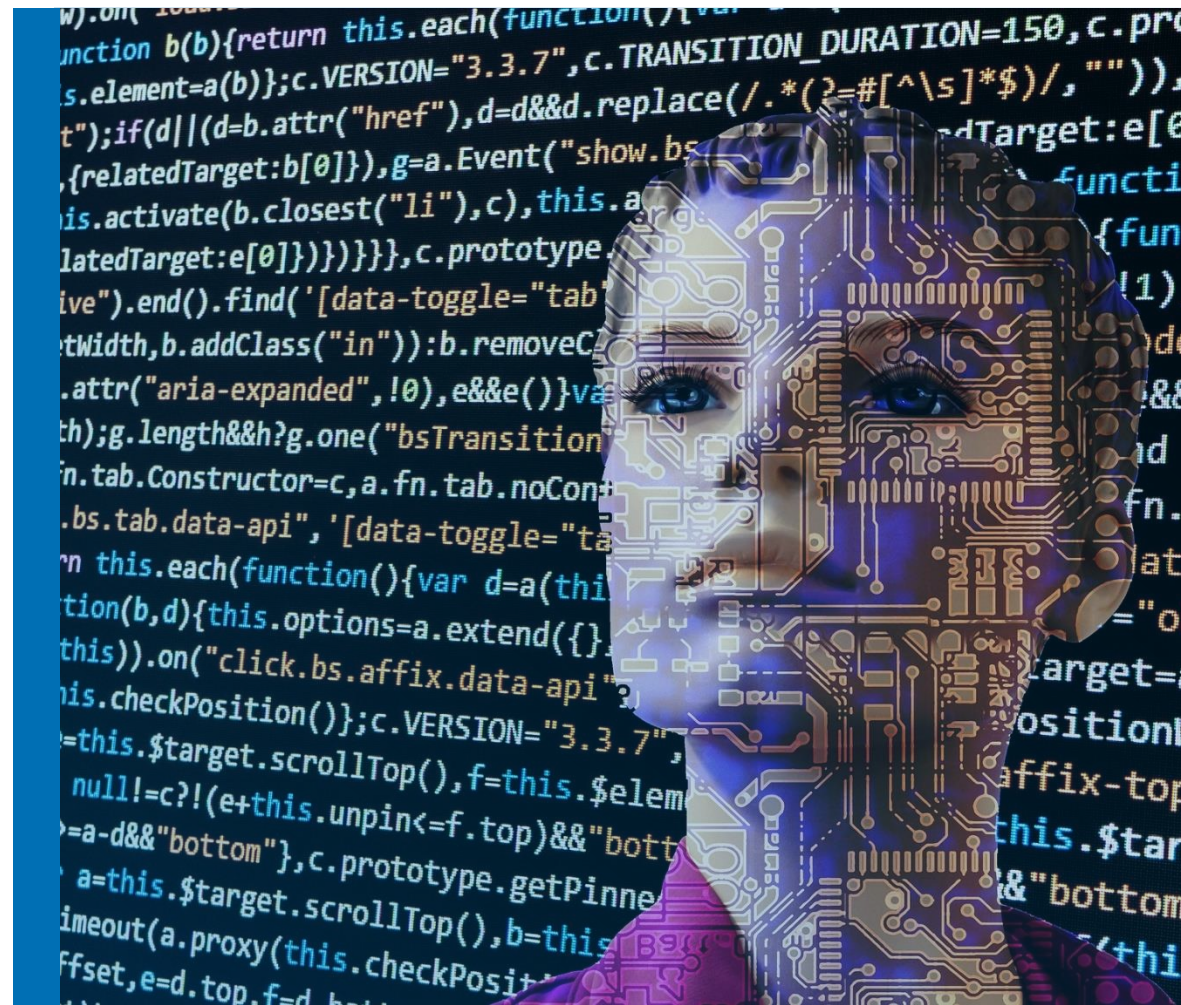
Speech recognition to transcribe  
a user's speech into text



Natural language understanding;



Natural language generation to  
produce a response.





## EPO considers some NLP techniques to be more patentable than others



Speech recognition, which the Guidelines expressly recognize as a “technical purpose” is readily patentable



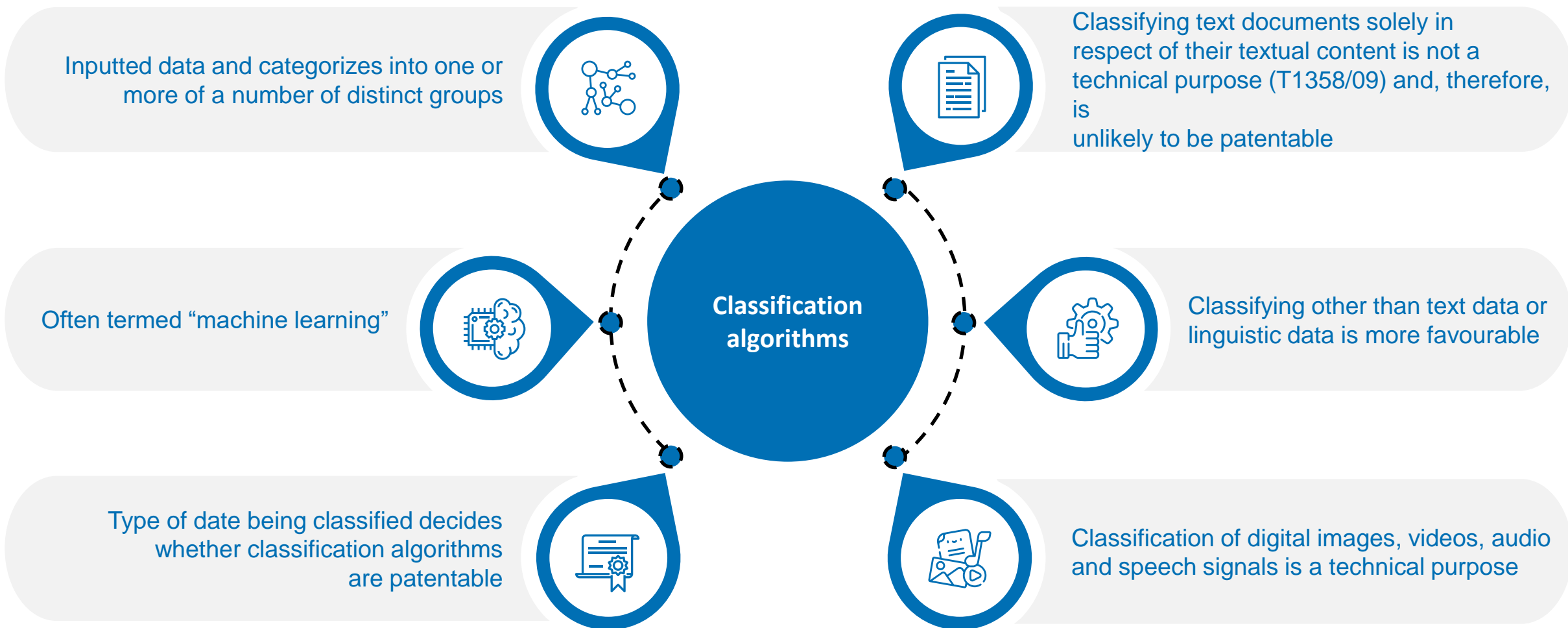
Natural language understanding or comprehension, is considered more difficult to patent

NLP is not a recent technology and the difficulties in patenting NLP, and other technologies involving linguistics, are longstanding





# Classification Algorithms







# Recommendation Systems



Recommendation systems provide suggestions for content that is likely to be of interest to a particular user



Book selling websites often employ a recommendation system to suggest new books that a reader might enjoy

**amazon.com**<sup>®</sup>



Great commercial significance but extremely difficult to patent





# Claiming AI-Related Inventions

AI-related inventions may have three potentially patentable aspects



**Generating** training data for use in training a model, such as an artificial neural network;

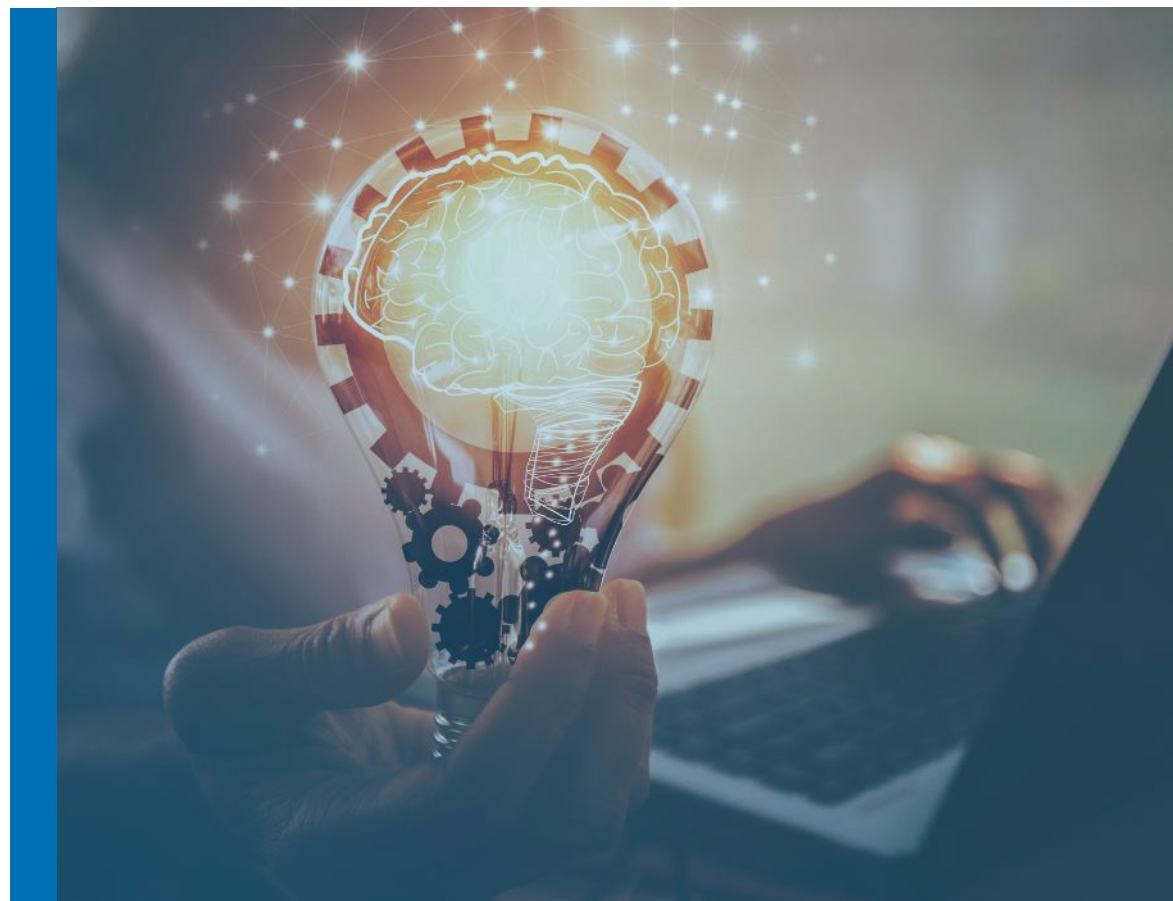


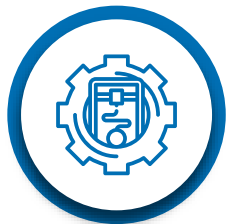
**Training** the model using the training data (machine learning); and



**Using** the trained model to analyze new data

Each of these aspects should have separate independent claims





Trained model may be difficult to  
define in concrete technical terms



“Product-by-Process” claim  
e.g., Emotional Perception

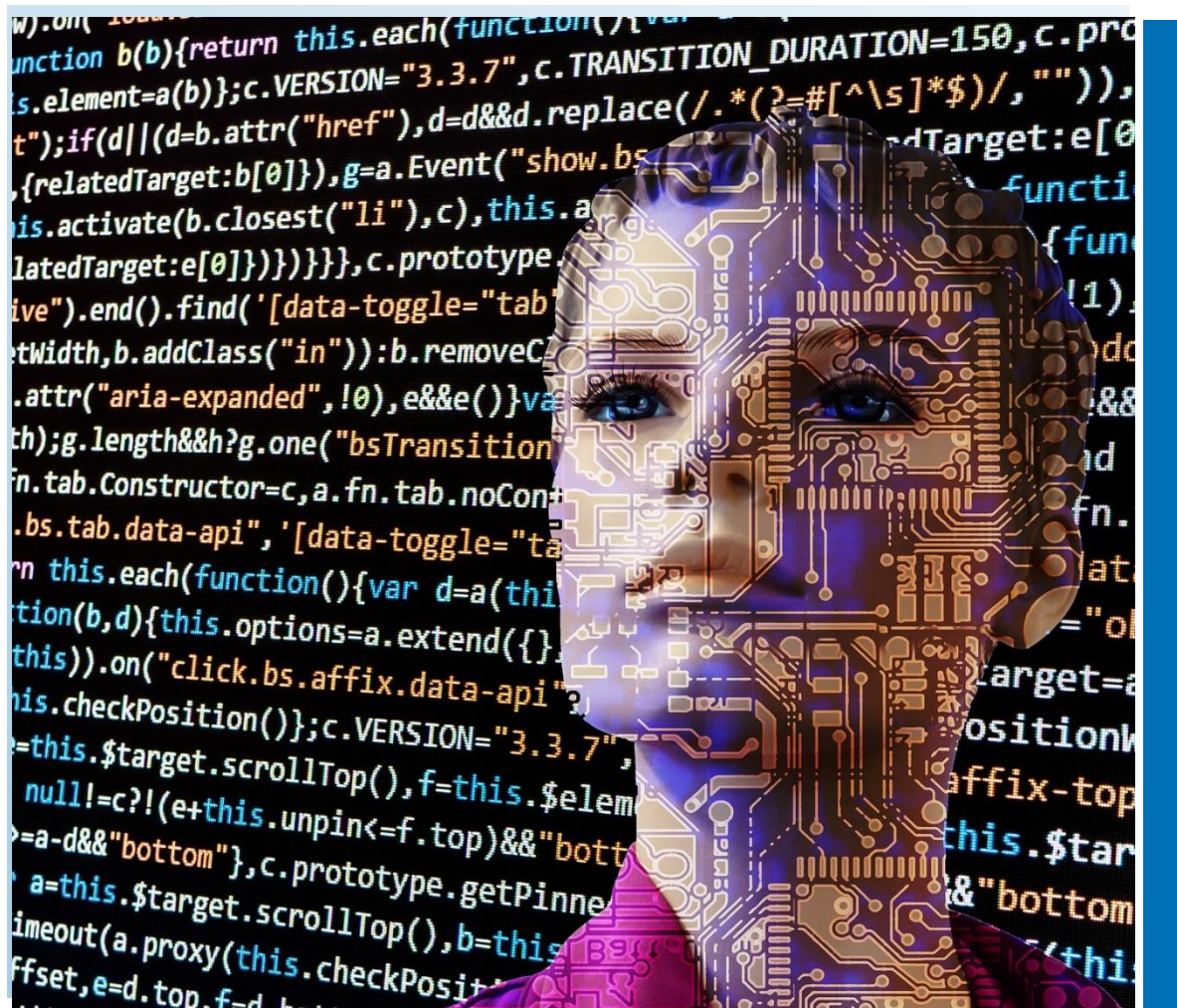
Even if a product-by-process claim is not allowable, a well-drafted claim to a method of training a model will confer protection on the model itself under Article 64(2) EPC







## Inventive Step



Not “could” the skilled person arrive at the invention but “would” they do so?



- Large number of parameters
- No obvious relationship
- Human selection of training parameters



Problem-Solution approach is required  
Solution must be in the technical sphere



## AI as Inventor or Creator

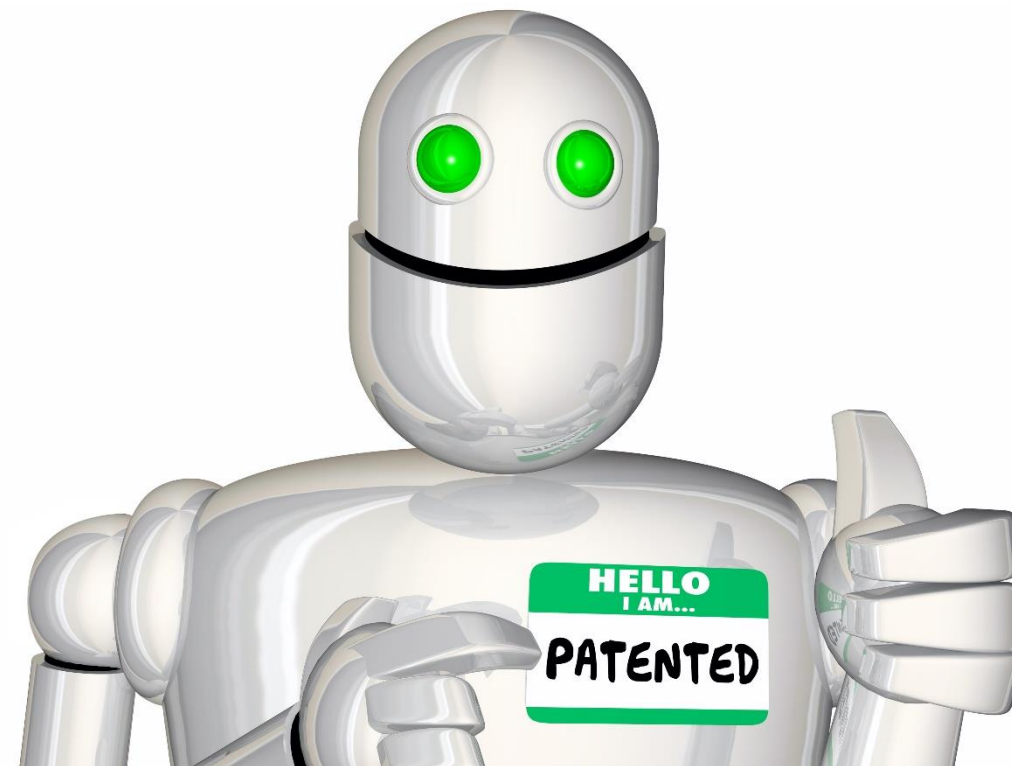


EPO US UK : No (EPO - J0008/20)  
South Africa: Yes  
Germany: No – but include in description



US Copyright Office: Creator must be a human being

“...the inventor designated in a European patent must be a natural person ... the understanding of the term inventor as referring to a natural person appears to be an internationally applicable standard, and that various national courts have issued decisions to this effect.”







# ChatGPT

## IP and other legal issues from massive language models



Uses copyrighted information +  
non-copyrighted data



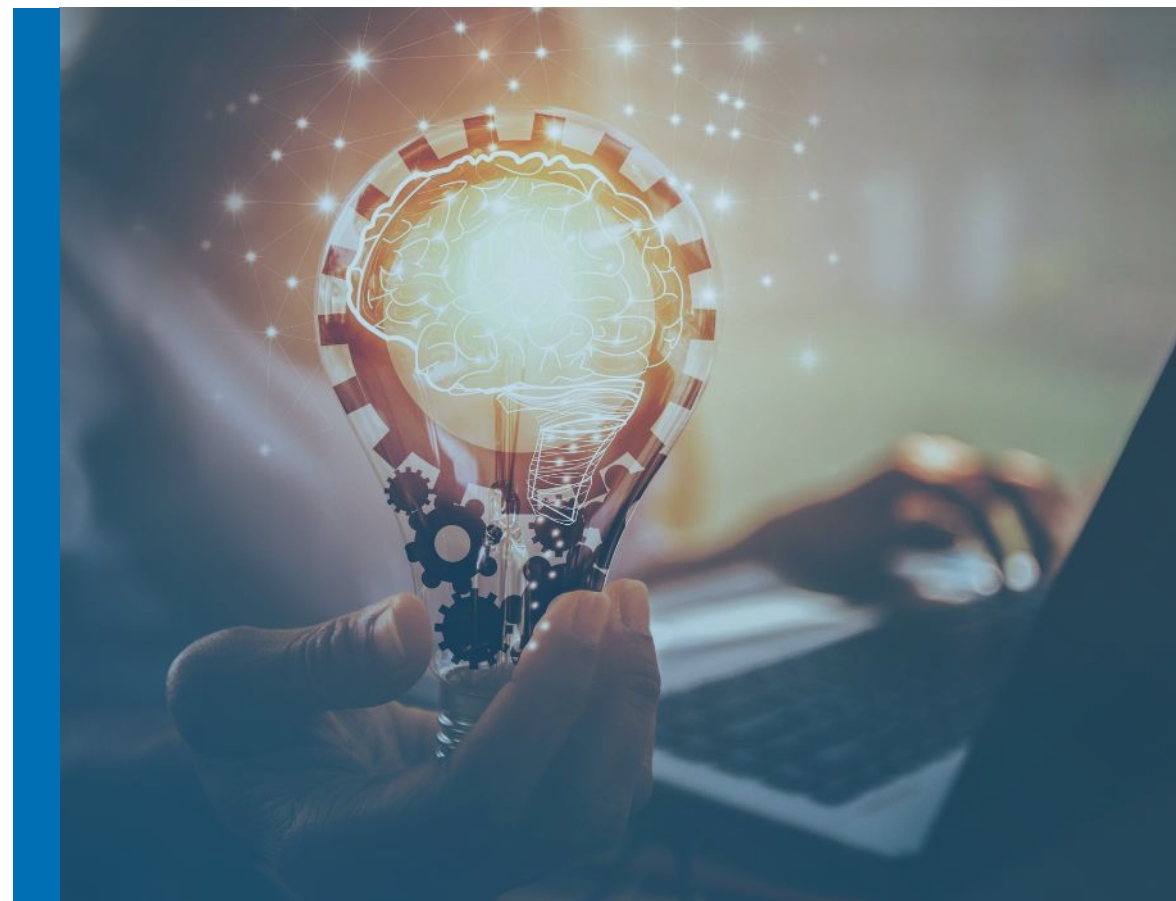
Produces useful and useless  
information



Liability?

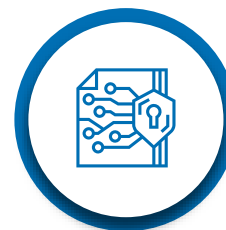


Many unanswered questions





## Conclusions – Protection of AI Innovations



Data can be protected



Copyright for programs



Patenting possible if you can describe  
problem-solution approach



## Contact



**Thanks!**

Dr. Robert Harrison

Sonnenberg Harrison Partnerschaft mbB

+49 1511 2066 303

[www.sonnenbergharrison.law](http://www.sonnenbergharrison.law)

Email: [consulting@robharrison.eu](mailto:consulting@robharrison.eu)

Munich | Berlin | Paris | Vienna | Zürich | London



<https://www.linkedin.com/in/robertharrison/>